

# E1 WALL-MOUNT RACK RANGE

When a simple, cost effective and attractive solution is required to mount rackmount gear to a wall, the E1 Range of wall mount enclosures is the ideal solution to most situations. Sporting a opening in the back for easy cable access and a lockable safety glass door on the front, this rack is sure to impress even the pickiest of wall mount enclosure installers or users.

**LEGEND**  
Performance Technology

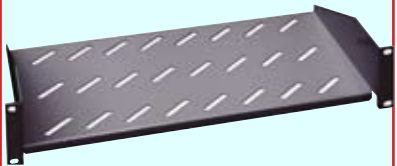
WALL MOUNTED - 400mm Mountable Depth

E1.06400B	6RU - 566mmW x 400mmD x 350mmH
E1.09400B	9RU - 566mmW x 400mmD x 475mmH
E1.12400B	12RU - 566mmW x 400mmD x 600mmH
E1.18400B	18RU - 566mmW x 400mmD x 875mmH

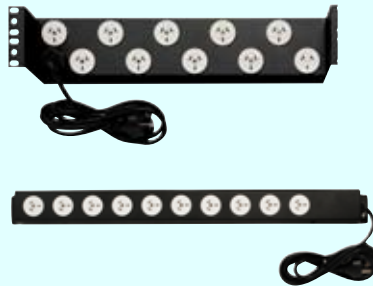
## OPTIONAL EXTRAS

**Cantilever Shelf 19"**  
Mounts to front of rack  
only

**E4.91.3B** - 300mm Deep  
**E4.91.4B** - 400mm Deep



**19" 10 way Horizontal or  
Vertical Power Rail**  
**PR10H** or **PR10V**



**LEGEND**

# E11 SWING FRAME RACK RANGE

These unique racks offer a swingable rear section, which once mounted to wall, will allow the whole rack to “swing” away from the wall. This feature allows greater rear access to your equipment without removing any hardware. Great for accessing rear of patch panels or changing configuration of cabling at rear of cabinet without the need to remove the hardware in question.

**LEGEND**  
Performance Technology

WALL MOUNTED SWING FRAME - 400mm Mountable Depth

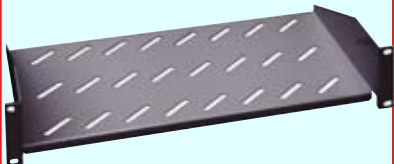
E11.0652B	6RU - 551mmW x 523mmD x 375mmH
E11.0952B	9RU - 551mmW x 523mmD x 500mmH
E11.1252B	12RU - 551mmW x 523mmD x 625mmH
E11.1852B	18RU - 551mmW x 523mmD x 900mmH



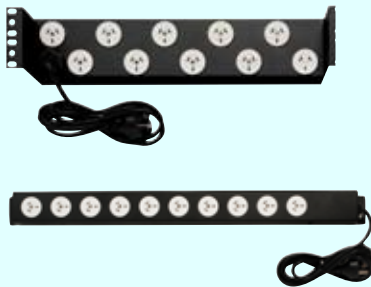
## OPTIONAL EXTRAS

**Cantilever Shelf 19”**  
Mounts to front of rack  
only

**E4.91.3B** - 300mm Deep  
**E4.91.4B** - 400mm Deep



**19” 10 way Horizontal or  
Vertical Power Rail**  
**PR10H or PR10V**



FEATURES A UNIQUE  
SWING FRAME DESIGN

Easily Access your rackmount  
gear from the rear once  
mounted on wall.

**LEGEND**

# E7 FLOOR STANDING RACK RANGE

The E7 range of rack cabinets features solid welded frames, Depth adjustable side rails, and precut cable entry locations. Made from 1.5mm and 2mm thick elctro-galvanised sheet steel and powder coated in a midnight grey textured finish, these racks are built to last and look good as well. They can be customised with different configurations to ensure that the rack solution you purchase is customised to your needs. They are also shipped **FREE** anywhere is Australia\* and can be shipped **Direct** to your customer with no invoice if you require.

**LEGEND**  
Performance Technology

## Rack Specific Accessories Chart

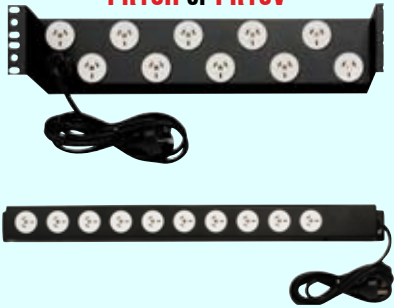
Rack Part #	RU Height	Width	Height	Total Depth Of Rack	Mountable Depth of Rack	Shelf	Sliding Shelf	Keyboard Drawer
E7.0966B	18RU	600	940	600	550	E2.95.4B	E4.92.4B	E4.15.0B
E7.1266B	24RU	600	1200	600	550	E2.95.4B	E4.92.4B	E4.15.0B
E7.1269B	24RU	600	1200	900	850	E2.95.7B	E4.92.7B	E4.15.91B
E7.12611B	24RU	600	1200	1100	1050	N/A	N/A	N/A
E7.12612B	24RU	600	1200	1200	1150	N/A	N/A	N/A
E7.1866B	38RU	600	1800	600	550	E2.95.4B	E4.92.4B	E4.15.0B
E7.1868B	38RU	600	1800	800	750	E2.95.6B	E4.92.6B	E4.15.0B
E7.2166B	45RU	600	2115	600	550	E2.95.4B	E4.92.4B	E4.15.0B
E7.2168B	45RU	600	2115	800	750	E2.95.6B	E4.92.6B	E4.15.0B
E7.2169B	45RU	600	2115	900	850	E2.95.7B	E4.92.7B	E4.15.91B

**LEGEND**

# E7 FLOOR STANDING RACK ACCESSORIES

**LEGEND**  
Performance Technology

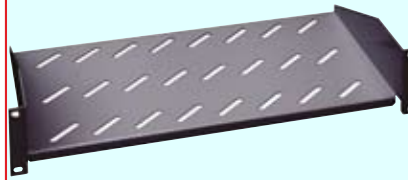
**19" 10 way Horizontal or Vertical Power Rail**  
**PR10H or PR10V**



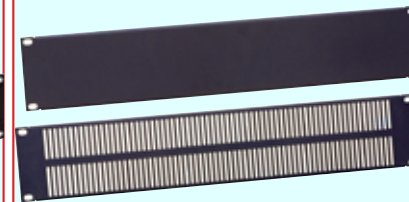
**Castor Wheels - Sold as a set of 4, 2 with locks and 2 Without locks**  
**E7.65.NB**



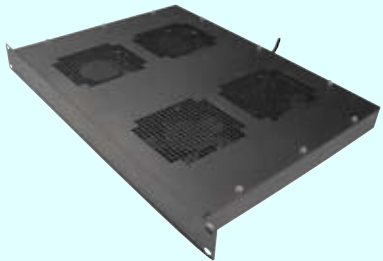
**Cantilever Shelf 19" Mounts to front of rack only - Suits all E7 Racks**  
**E4.91.3B - 300mm Deep**  
**E4.91.4B - 400mm Deep**



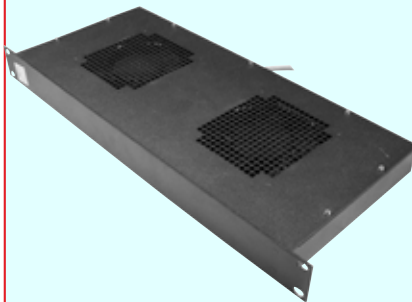
**Blanking Panels to cover empty RU Spaces**  
**E4.910.0B 1RU Blank**  
**E4.920.0B 2RU Blank**  
**E4.910.1B 1RU Vented**  
**E4.920.1B 2RU Vented**



**4 FAN 1RU RACK MOUNTABLE FAN MODULE**  
**E4.19.4.240B**



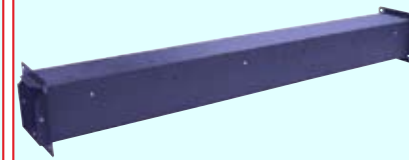
**2 FAN 19" 1RU RACK MOUNTABLE FAN MODULE**  
**E4.19.2.240B**



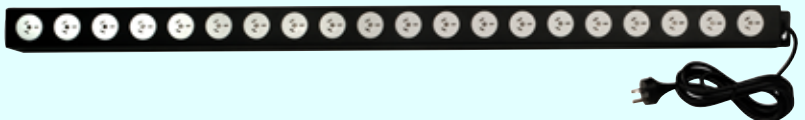
**CAGE NUT SCREW (BAG OF 40) 1RU RACK MOUNTABLE FAN MODULE**



**Blanking Panels to cover empty RU Spaces**  
**E7CDUCT900 900mm Duct**  
**E7CDUCT1500 1500mm Duct**



**19" 20 way Vertical Power Rail**  
**PR20V**



**24 Port Patch Panel - Available in Catagory 5e or 6**  
**PP24C5E - Cat 5e Version**  
**PP24C6 - Cat 6 Version**



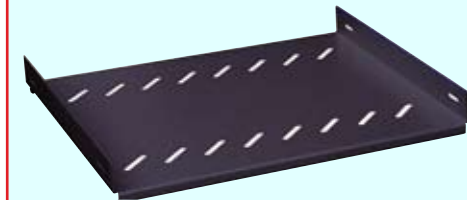
**Fixed Trays - Suitable E7 range of racks only**

**E2.95.4B - Suitable for 600mm Deep Cabinet**

**E2.95.6B - Suitable for 800mm Deep Cabinet**

**E2.95.7B - Suitable for 900mm Deep Cabinet**

**E2.95.8B - Suitable for 1000mm Deep Cabinet**



**LEGEND**